

# GOODLAND

- TX -



COMMUNITY GUIDE



*A new*  
**TEXAS TOWN  
IN THE MAKING**

Here,  
new-fashioned ideas meet  
old-fashioned ideals and community  
and craft go hand-in-hand.  
Discover a fresh mix of homes  
neatly woven into land that gives way  
to lakes, trails, hills and the open prairie.  
And life that promises to be both  
simpler and richer.

**WE'RE GLAD YOU'RE HERE.**

# THE COMMUNITY

## THE RETREAT

A signature amenity and gathering place that will connect all to trails, water, nature and community. Look forward to a pool, playground and event lawn, too.

*Opening in 2026*



WHAT'S HERE NOW.  
WHAT'S SOON-TO-BE.



## SCHOOLS

Students will attend either Midlothian Independent School District (which has plans to build a new elementary school here) or Venus Independent School District.



## THE HANGOUT

Goodland's existing pool, playground and dog park. The perfect place to have fun, unwind, make a splash — and hang out. *(Get excited: a pickleball barn, beer garden and more are coming in 2026.)*

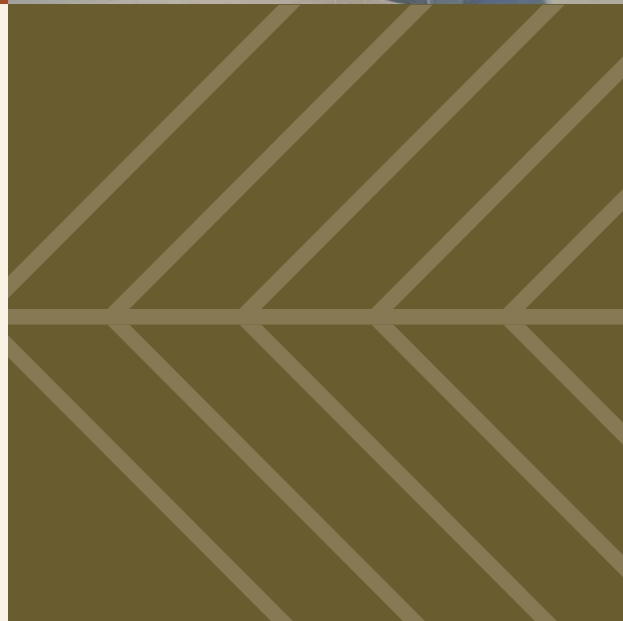


## PRAIRIE PRESERVATION

We're ensuring our Blackland Prairie ecosystem is protected for generations to come — including the Soap Creek Corridor that meanders through the community.

## NATURE & TRAILS

A network of trails will be woven throughout the community. A collection of parks and playgrounds will give you somewhere inspiring to go.



## DOWNTOWN GOODLAND & GOODLAND HUB

Two planned destinations that will bring the heart of the community to life. Downtown Goodland will be your go-to for bites, goods and everyday conveniences. At Goodland Hub, you'll find places like an event venue, a general store, a church and more.



# A LOVELY MIX OF HOMES

## MORE THAN A PLACE TO HANG YOUR HAT

We've handpicked a collection of builders that are bringing all kinds of home styles and sizes into the fold — and there are even more types of homes and new villages on the horizon.

### OUR BUILDERS

Now selling in Prairie Ridge and Feather Grass villages.



**BEAZER HOMES**  
From the low \$400s



**GRAND HOMES**  
From the mid \$400s



**DAVID WEEKLEY HOMES**  
From the mid \$300s



**HIGHLAND HOMES**  
From the mid \$300s

### VILLAGES STITCHED TOGETHER WITH PRIDE

#### PRAIRIE RIDGE VILLAGE

Goodland's inaugural village offering single-family homes with easy access to The Hangout, trails and more.

#### FEATHER GRASS VILLAGE

This village is home to our newest single-family residences and the community's signature amenity and ponds, The Retreat.

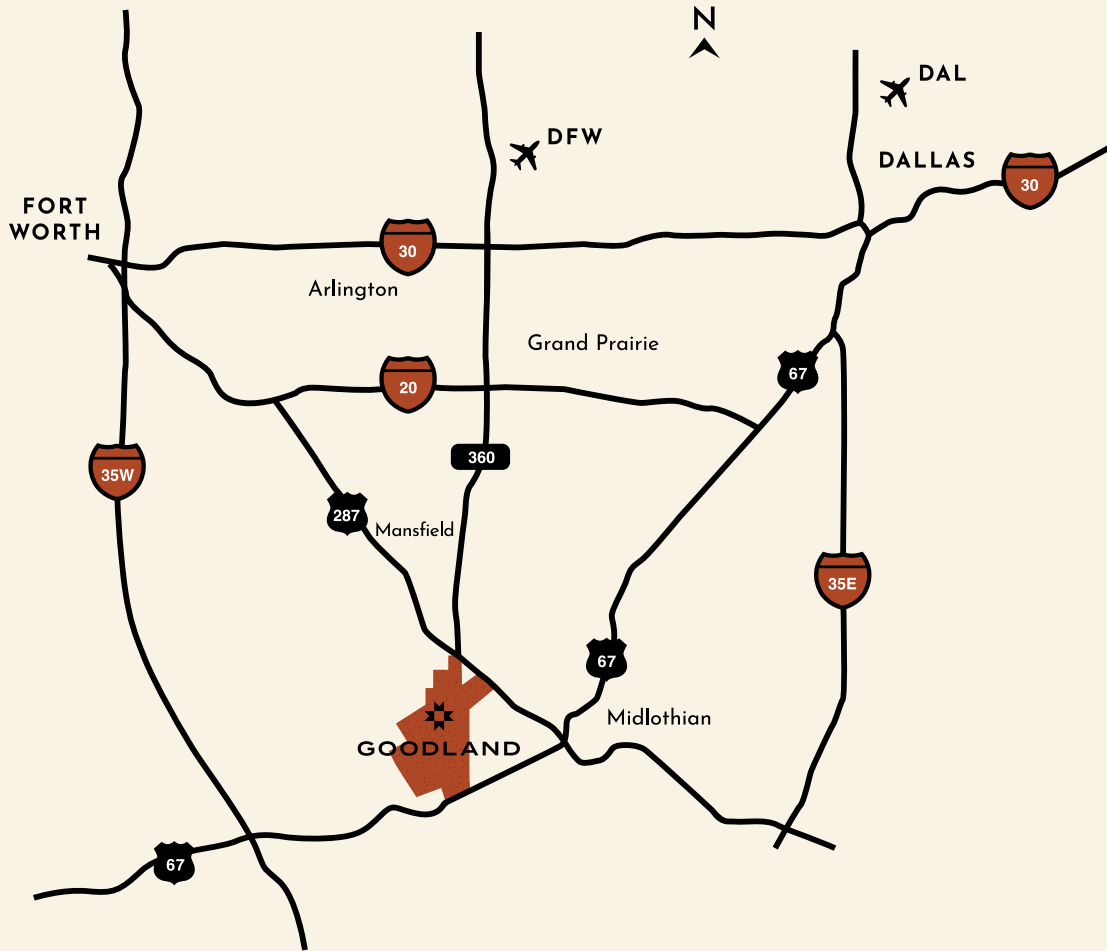
*This map represents an artist's conception of proposed development and existing sections. No warranties or representations, expressed or implied, concerning the final intended use, design or proposed improvements is made herein. All plans for land use or facilities use are subject to change without notice and nothing presented on this map shall obligate the owner or any other entity to construct or develop facilities as shown. April 2026.*



SCAN TO USE OUR INTERACTIVE HOMEFINDER

# SO CLOSE TO SO MUCH

Goodland is in the heart of the Metroplex's new southern gateway — smack-dab in the middle of where you need and want to be. From boutiques to boating, dining to DFW. See what's what, and what's where, below.



<b>Downtown Dallas</b>	30 miles	<b>Downtown Mansfield</b>	10 miles
<b>Downtown Ft Worth</b>	30 miles	<b>Downtown Midlothian</b>	5 miles
<b>DFW Airport</b>	30 miles	<b>DAL Airport</b>	36 miles

# GOODLAND

— TX —

4701 Buttonbush Dr.  
Goodland, Texas  
877.378.2388

[GOODLANDTX.COM](http://GOODLANDTX.COM)

SCAN  
TO WATCH  
OUR VISION  
VIDEO



**BROUGHT TO YOU BY PROVIDENT**

Statements and images are conceptual in nature, subject to change without notice and are provided for general informational purposes only and shall not be relied upon. 4/26 